

1. What's the main cause of most earthquakes?

- a. Pressure from within the earth's crust
- b. Hurricanes
- c. Human activity
- d. Changes in temperature within the earth's mantle

2. Which of the following is a true statement about tectonic plates?

- a. All tectonic plates are located at the earth's core
- b. They're located approximately 10 meters below the surface of the ocean
- c. They're located in the molten layer beneath the earth's crust
- d. All of the earth's landmass rests on tectonic plates

3. The weight of the lithosphere keeps the mantle in a semi-solid state. What can you infer from this?

- a. Pressure and heat have similar effects on solids
- b. Pressure raises the melting point of solids
- c. Pressure lowers the melting point of solids
- d. Pressure has no effect on the melting point of solids

4. Place the following in sequence from highest to lowest temperature: A) Lithosphere; B) Mantle; C) Core

- a. C, A, B
- b. B, C, A
- c. C, B, A
- d. A, C, B

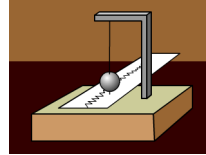
5. What can you infer from the fact that tectonic plates are always moving around?

- a. New volcanoes form every few years.
- b. The shape and location of the continents have changed over time.
- c. Tectonic activity probably caused the last Ice Age.
- d. Earthquakes will continue long after hurricanes and tsunamis have stopped.

6. Why are surface waves more destructive to buildings than the initial seismic wave in an earthquake?

- a. It creates more sustained motion on the surface
- b. It reaches the surface faster
- c. It reaches deeper below the surface
- d. It travels farther from the hypocenter

7.

**What is this instrument called?**

- a. Richter scale
- b. Barometer
- c. Electrograph
- d. Seismograph

8. Why are faults sometimes referred to as "active boundaries?" Choose the best answer.

- a. Because they are all volcanically active
- b. Because they serve as boundaries between nations
- c. Because the earth's crust shifts on either side of them
- d. Because people must actively avoid faults to escape injury

9. In the phrase, "The Richter scale measures the potency and duration of seismic events," what does "potency" mean?

- a. Speed
- b. Strength
- c. Type
- d. Time

10. Which city is most likely to experience a strong earthquake?

- a. Los Angeles
- b. Chicago
- c. New York
- d. Miami